

# STREAMLINE® OMNIWALL-CL

## CLIP & CONCEALED FASTENER, HEAVY DUTY RAINSCREEN PANEL

### OVERVIEW:

LITSCO's OmniWall CL panel is heavy duty clip mounted panel to offering a cost effective alternate aluminum to plate and ACM rainscreen systems. The pre-installed clips create fast installation to substrate, ideal for slab cover and shadow box applications.

### ▶ TYPICAL STANDARD PANEL SIZE GUIDE:

22" x 22"	46" x 46"
22" x 44"	46" x 58"
22" x 118"	46" x 94"

\*Custom to meet building lines

### ▶ TESTING:

ASTM E330 -	ASTM E331 -
Load Structural	Water Penetration
Load Deflection	

### ▶ MATERIALS:

#### KYNAR PAINTED ALUMINUM (AL)

2 Coat Kynar Finish is Standard. A full list of all standard, premium colors, 3 coat, and custom colors is available upon request. Finish warranties of 20 years available.

\*Popular colors listed, Additional Colors may be available

<b>BONE WHITE SR</b> 063 ALUMINUM
<b>SANDSTONE SR</b> 063 ALUMINUM
<b>SILVER METALLIC</b> 063 ALUMINUM
<b>MATTE BLACK</b> 063 ALUMINUM
<b>DARK BRONZE SR</b> 063 ALUMINUM
<b>CUSTOM PAINTED KYNAR COLORS</b> IN .080" OR .090" THICKNESS

\*Actual colors may vary from this representation

### FEATURES:

Vertical or horizontal panel orientation allows this panel to fit to your design requirements.

Heavier gauge materials result in a stronger panel. Standard panels sizes in both small and large modules.

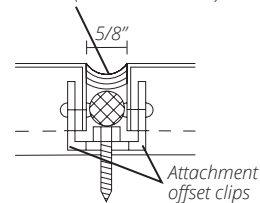
Properly sealed joints provide full protection against water infiltration.

ASTM E330, E331 tested for structural integrity and ASTM E283 tested for water infiltration resistance.

### TYPICAL JOINT DETAIL

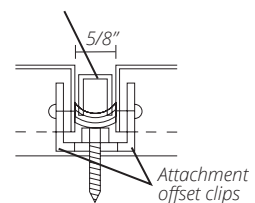
#### WITH EXPOSED SEALANT

Backer rod & structural silicone sealant (color as selected)

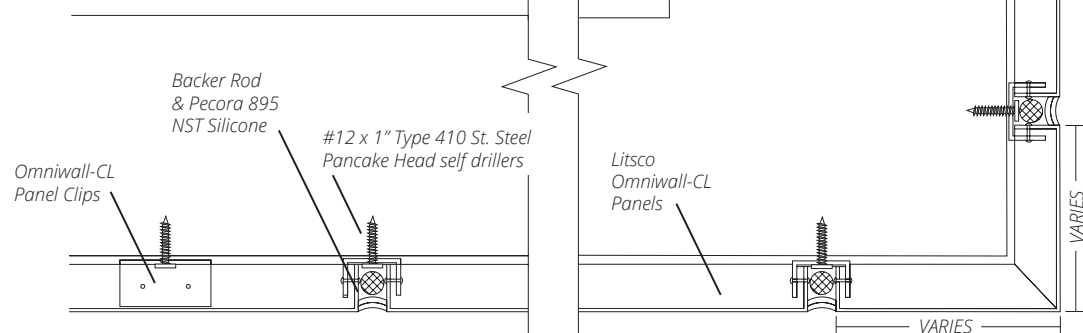


#### WITH REVEAL CAP

.040" Aluminum painted reveal cap set in structural silicone translucent caulking



### PANEL JOINT (WITH SUBGIRT SYSTEM)



► **INSTALLATION:**

**TRIM:**

All flashing and trim will be fabricated by LITSCO or a qualified fabricator. Flashing shall be .032"-.040" aluminum or 24 GA steel.

**FASTENERS:**

#12 hex head, self-drilling stainless steel fastener with neoprene washer.

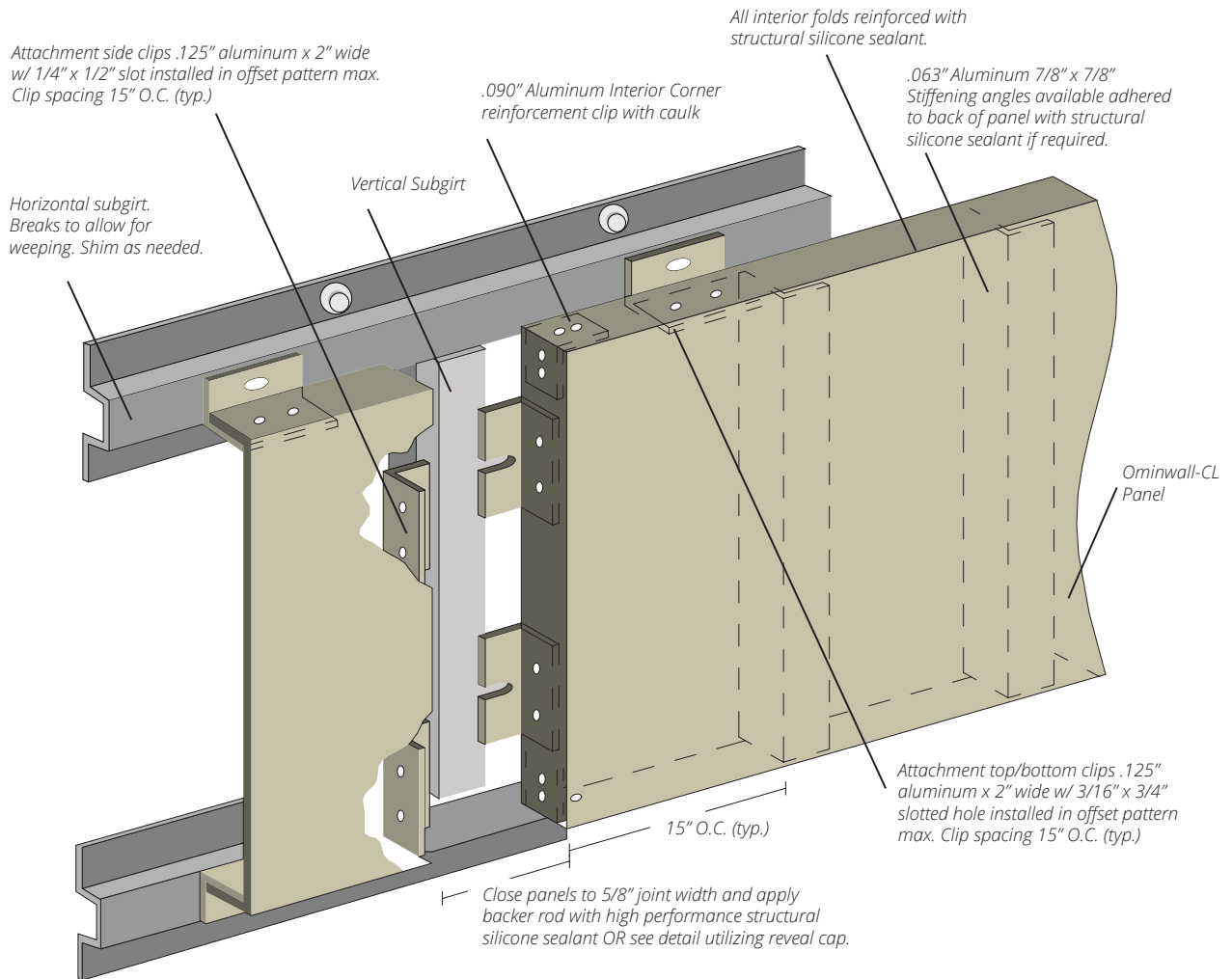
**SUBGIRTS:**

Streamline OmniWall CL panels are intended to be installed directly onto 18 GA (1/2") deep galvanized steel subgirts. Maximum spacing 30" O.C.

**PANELS:**

Set panel direct to subgirt, set joint to 5/8" wide, set backer rod and caulk joint with high performance Pecora silicone sealant.

*\*Always follow manufacturer's guidelines for proper storage and handling prior to install.*



**LITSCO**

LONG ISLAND TINSMITH SUPPLY CORP.



EST. 1918

WWW.LITSCO.COM

76-11 88TH STREET, GLENDALE, N.Y. 11385

PHONE: 718.846.0400 | FAX: 718.846.7803

This is a Page Divider

Continue for the OmniWall CL FUSION  
Data Sheet

# STREAMLINE® OMNIWALL-CL FUSION™ RAINSCREEN SYSTEM

## DRILL FREE EXTRUSION INSTALLATION ALUMINUM PLATE PANELS

### OVERVIEW:

LITSCO'S OmniWall CL Fusion™ panel system partners the proven Drill-Free Extrusion installation with LITSCO's high quality plate panel, to provide true rainscreen capability. The extrusion attachments result in faster installation and improved productivity.

### ▶ TYPICAL STANDARD PANEL SIZE GUIDE:

22" x 22"	46" x 46"
22" x 44"	46" x 58"
22" x 118 "	46" x 94"

*\*Custom to meet building lines*

### ▶ TESTING:

ASTM E330 - Load Structural Load Deflection	ASTM E331 - Water Penetration
---	----------------------------------

### ▶ MATERIALS:

#### KYNAR PAINTED ALUMINUM (AL)

2 Coat Kynar Finish is Standard. A full list of all standard, premium colors, 3 coat, and custom colors is available upon request. Finish warranties of 20 years available.

*\*Popular colors listed, Additional Colors may be available*

**BONE WHITE SR**  
063 ALUMINUM

**SANDSTONE SR**  
063 ALUMINUM

**SILVER METALLIC**  
063 ALUMINUM

**MATTE BLACK**  
063 ALUMINUM

**DARK BRONZE SR**  
063 ALUMINUM

CUSTOM PAINTED KYNAR COLORS  
IN .080" OR .090" THICKNESS

*\*Actual colors may vary from this representation*

### PANEL FEATURES:

Vertical or horizontal panel orientation allows this panel to fit to your design requirements.

Heavier gauge materials result in a stronger panel. Standard panels sizes in both small and large modules.

2" system depth from face of panel to attachment at substrate

ASTM E330, E331 tested for structural integrity and ASTM E283 tested for water infiltration resistance.

### EXTRUSION FEATURES:

ASTM E283, E330, E331 tested

AAMA 5008-7 compliant

LEED 3:1 recycled content vs competitors

Progressive, non-sequential design allows for removal of individual panels

Pre-Cut & Punched mid and half clips

► **INSTALLATION:**

**TRIM:**

All flashing and trim will be fabricated by LITSCO or a qualified fabricator. Flashing shall be .040"-.050" aluminum.

**SUBSTRATE:**

Install minimum 18GA ZEE or 18GA Subgirt directly to substrate.

**FASTENERS:**

#10 self-drilling stainless steel fastener.

**PANELS:**

Set panel into extrusion clip.

**FUSION™ EXTRUSION:**

Attach to substrate with #10 self-drilling stainless steel fastener.

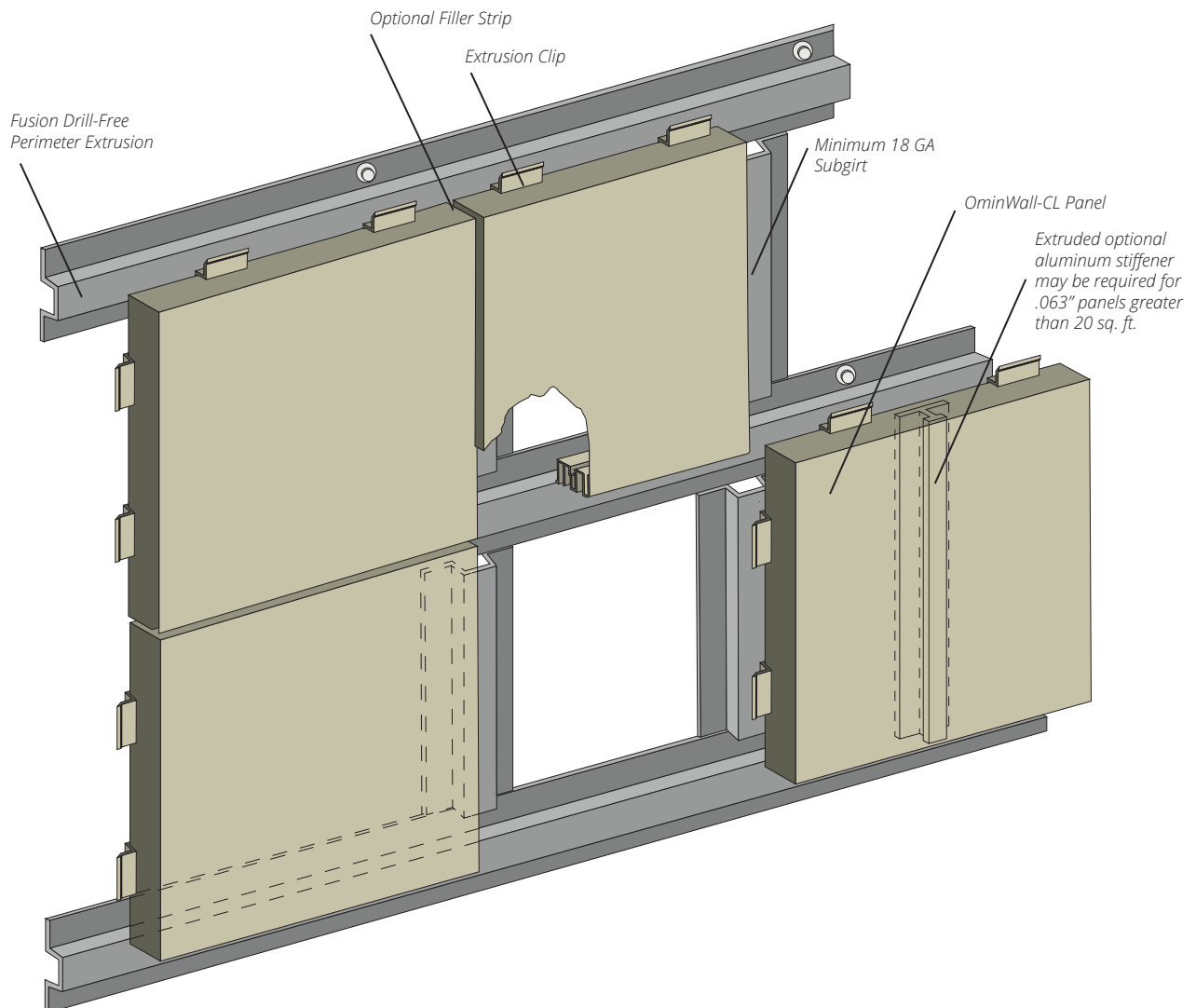
Extrusion is installed in full perimeter of panel.

Starter clip at one side prior to panel attachment.

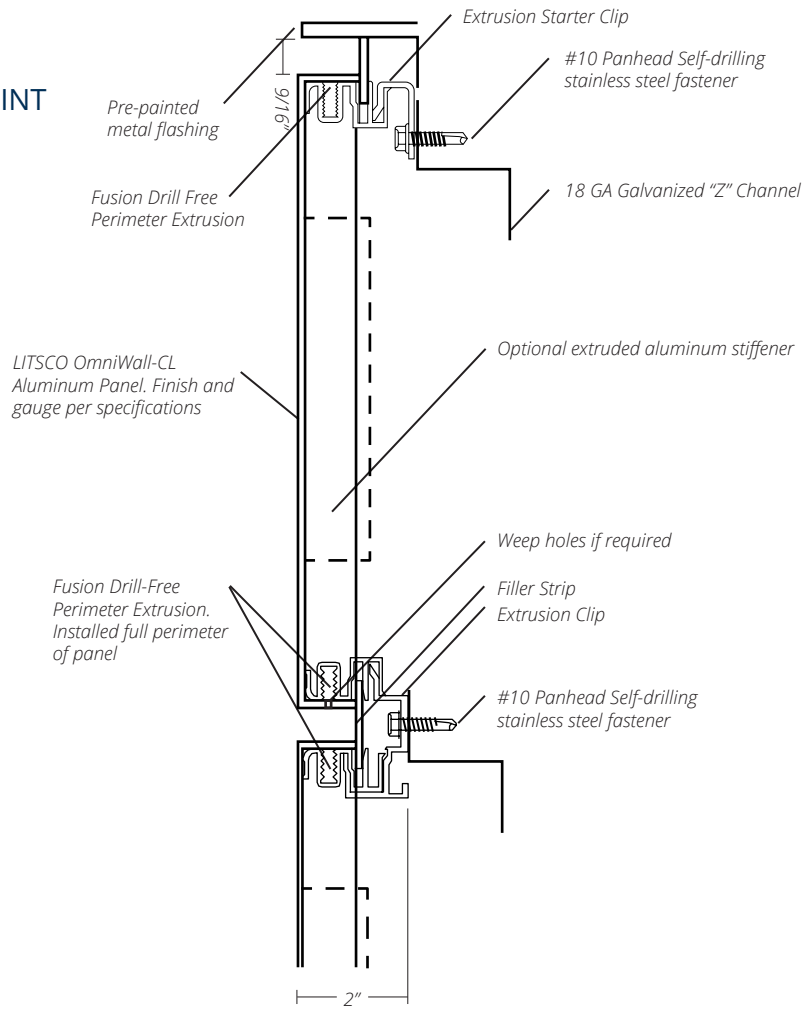
Use Filler Strip at joints.

Integrated extruded stiffener available for .063" panels greater than 20 sq. ft.

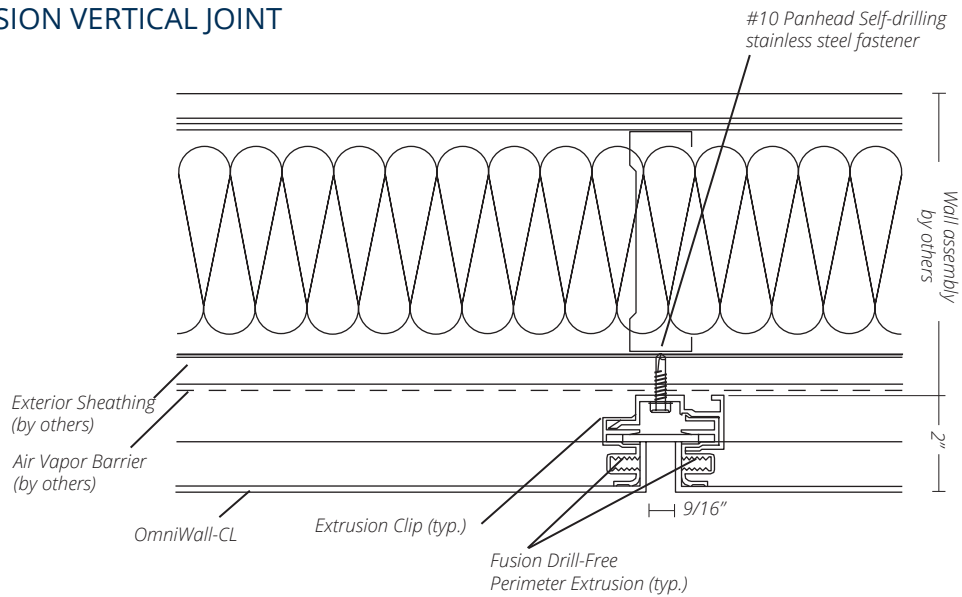
*\*Always follow manufacturer's guidelines for proper storage and handling prior to install.*



FUSION HORIZONTAL JOINT



FUSION VERTICAL JOINT



**LITSCO**

LONG ISLAND TINSMITH SUPPLY CORP.



EST.  
1918

WWW.LITSCO.COM

76-11 88TH STREET, GLENDALE, N.Y. 11385

PHONE: 718.846.0400 | FAX: 718.846.7803